




*Jacuzzi*®

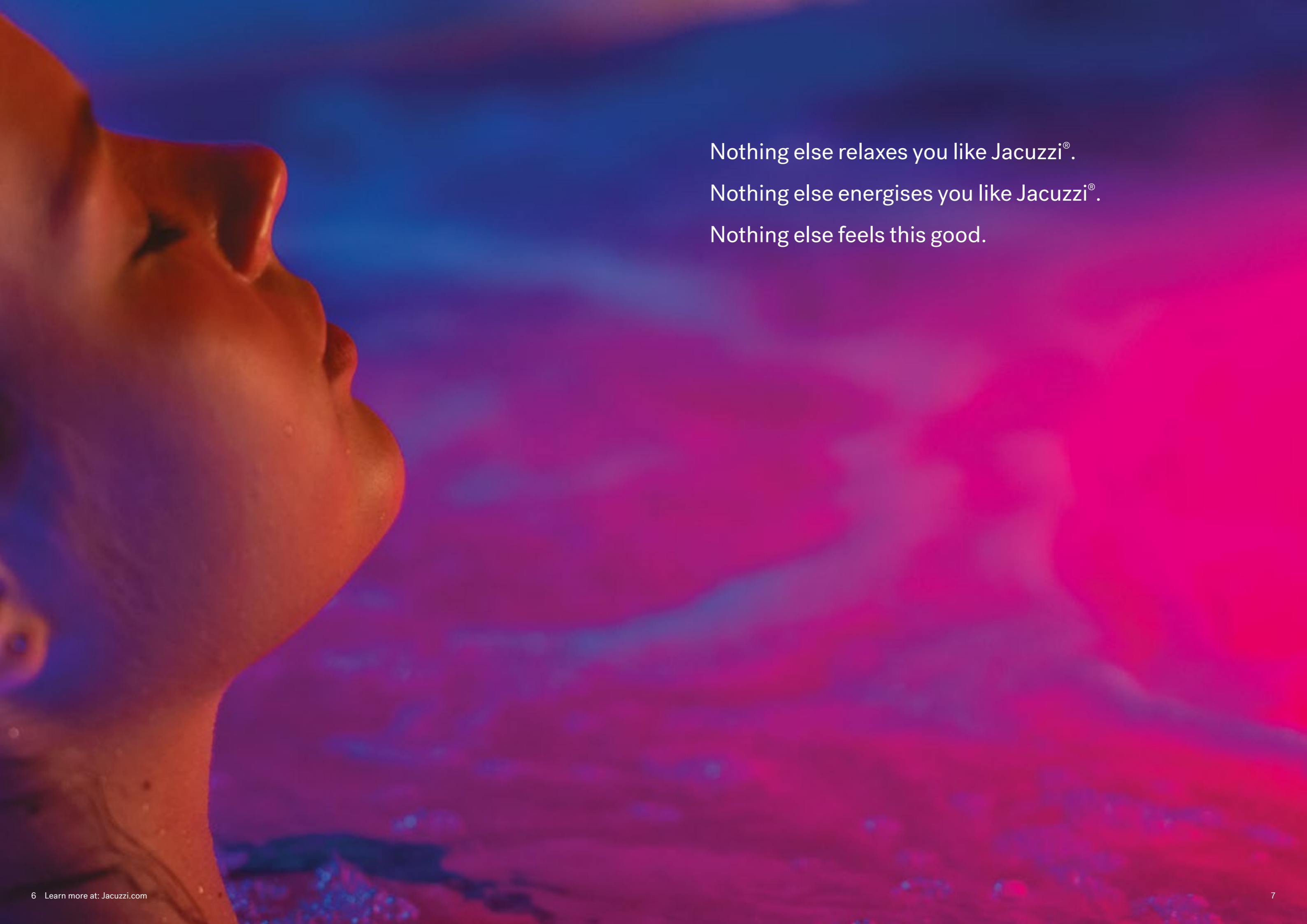
2026 Hot Tub Collection

A close-up, low-angle shot of a hot tub's interior. The surface is a dark, textured material, possibly acrylic or fiberglass, with a fine, grid-like pattern. A bright, glowing light strip runs diagonally across the frame, illuminating the surface and creating a strong contrast with the dark background. The light strip is positioned in the lower-left quadrant, extending towards the upper-right. The overall color palette is dominated by deep blues and blacks, with the warm, golden glow of the light strip providing a focal point.

Year after year, Jacuzzi® redefines  
what a Hot Tub can be.

Behind every jet, light, and contour, there's purpose.  
Every detail meticulously engineered and crafted.  
To relieve stress. To support restoration.  
To sleep better and rejuvenate you.  
It all begins the moment you step in.





Nothing else relaxes you like Jacuzzi®.

Nothing else energises you like Jacuzzi®.

Nothing else feels this good.

## 70 years of breakthroughs...

With decades of expertise in the science of moving water, our pioneering spirit has led to many signature achievements like precision-placed jets, ergonomic seating, and intuitive controls.

## ...go into every moment of bliss

Our commitment to wellness drives every breakthrough. We create spa experiences that go far beyond relaxation to support your overall sense of wellbeing, including our exclusive True Water<sup>®</sup> system and Infrared and Red Light therapy.

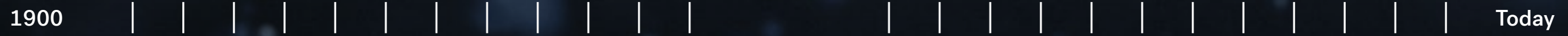
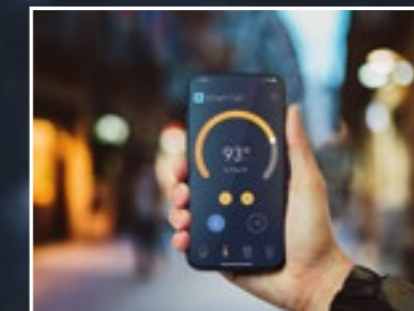
## From inventing at-home hydrotherapy...

The Jacuzzi® story began with a family of inventors whose pioneering patents took off in aviation and agriculture. In the 1940s, Ken Jacuzzi, age 2, was diagnosed with rheumatoid arthritis. Ken's father invented the world's first at-home pump providing comfort-focused hydrotherapy, composed of heat, buoyancy, and optimal massage.



## ...to perfecting it today

As Jacuzzi® became a household name, we've led the way in hydrotherapy decade after decade. Our Aqualibrium® formula produces the perfect balance of air and water, providing a unique high-volume, low-pressure massage that feels gentle on the surface but deep where it counts. And today, Infrared therapy and True Water® have continued to push the boundaries of joy, relaxation, and well-being.



# IR and Red Light therapy, another first from Jacuzzi®

Our exclusive Infrared and Red Light therapy works in harmony with hydrotherapy to soothe and rejuvenate beneath the surface and support well-being.



Check out all the benefits of IR and Red Light therapy.

## Rejuvenation meets relaxation

The rejuvenating powers of Infrared and Red Light therapy work together deep beneath the skin's surface to relieve pain, improve range of motion, and help you reach a state of mindfulness.

## Backed by research

Substantial evidence supports the efficacy of IR and Red Light therapy to relieve pain.<sup>1</sup> To ensure safety, it's been tested by certified third-party Intertek® test laboratories.<sup>2</sup>

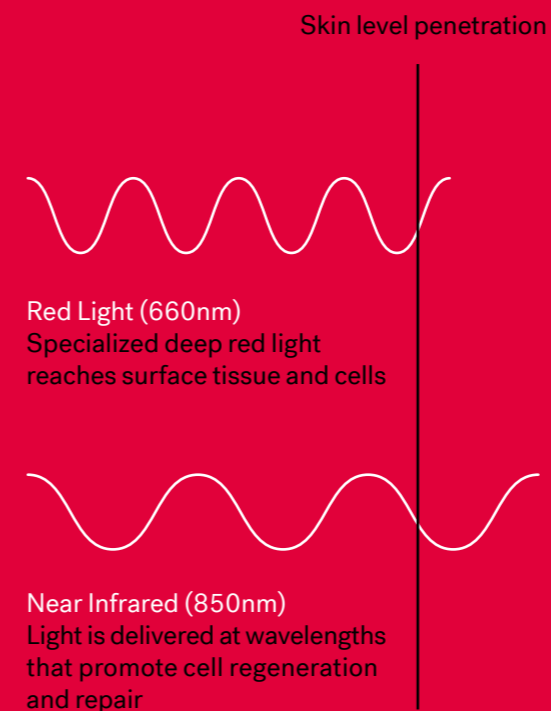
## Relief where it's needed most

Low back pain is the leading cause of disability worldwide,<sup>3</sup> so we strategically placed our IR and Red Light therapy where it can target deep tissue within the lumbar region of the lower back.

<sup>1</sup> Source: 2008 Cochrane Review

<sup>2</sup> The IR and Red Light device met the IEC 62471 Photobiological Safety Standard

<sup>3</sup> Source: World Health Organization



● IR + Red Light



# The next generation of water care

So fresh. So clean.<sup>1</sup> And 99.99% chlorine-free. Our revolutionary True Water<sup>®</sup> system makes spa water fresh and clear without all the harsh chemicals. You'll see, feel, and smell the difference.



## The most beautiful water

True Water<sup>®</sup> brings the revolutionary power of nanobubble technology to home spas. There are no traditional cleaners like bromine or salt. Instead, True Water<sup>®</sup> uses oxygen-filled nanobubbles to continuously cleanse and purify the water. For water so clear, it sparkles. So soft, it caresses and comforts you. So inviting, you'll fall in love with water again and again.

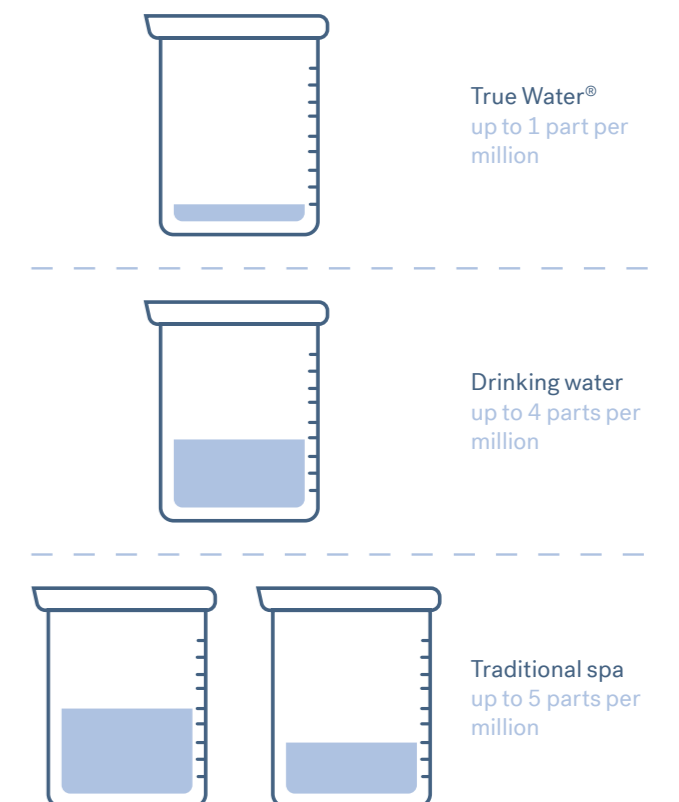
## Proven effective

True Water<sup>®</sup> is effective at reducing contaminants<sup>2</sup>, and we have the data to prove it. As the nanobubbles oxygenate the water, they deep-clean every part of your spa. Lab results<sup>3</sup> show that True Water<sup>®</sup> has reduced 99.9% of bacteria and viruses<sup>4</sup> without using chlorine or bromine. Effective and beautiful.

## Next-level wellness

Why pour lots of harsh chemicals into your Hot Tub? With True Water<sup>®</sup>, trillions of oxygen-filled nanobubbles will continuously scrub away contaminants to deliver clear, sparkling water that's 99.99% chlorine-free. That's even less than drinking water.<sup>5</sup>

## How much chlorine is in the water



Learn how True Water<sup>®</sup> is revolutionising water care.

<sup>1</sup> Clean is defined as the removal of microscopic debris (down to 3-micron level, varies by model) from the water.  
<sup>2</sup> Contaminants include dirt and grit. An independent laboratory found True Water<sup>®</sup> to be 2.5x more effective than regular water at scrubbing Hot Tub surfaces.  
<sup>3</sup> Antimicrobial efficacy testing was demonstrated using a simulated spa design for an in-use laboratory study based on guidance from the Standard Methods for the Examination of Water and Wastewater, 24th Ed., which are referenced in US EPA Guideline 810.2600.  
<sup>4</sup> Simulated in-use laboratory study tested against *Escherichia coli*, *Enterococcus faecium*, *Listeria pneumophila*, *Pseudomonas aeruginosa*, and coliphage (viral surrogate) demonstrated a 99.9% reduction in bacteria and viruses in as little as 2 hours.  
<sup>5</sup> Spa water is meant for soaking, not for sipping.

# High tech meets high touch

We believe advanced technology should be intuitive and personalised. Our exclusive **SmartTub®** system is like a remote control and command center that lets you monitor, operate, and protect your Jacuzzi® Hot Tub.



## Control

You can adjust temperature, jets, and lights, and lock down your Hot Tub to prevent usage while you're away. Set up your own automated schedule, receive alerts, and check your Hot Tub status, whether you're at home or on the go.

## Convenience

With SmartTub®, you can monitor and control your spa and track energy usage from anywhere in the world. Plus, SmartTub® performs daily diagnostic checks to ensure peak performance.

## Energy efficiency

Smart Heat Mode optimises savings by using your spa in the most energy-efficient way possible. It can reduce standby power by up to 25% and has a holiday mode that minimises water heating while you're away.

## Peace of mind

SmartTub® sends automatic alerts and maintenance reminders if your spa needs attention and can detect power outages to protect against freezing or overheating.



Learn more about SmartTub, including enhanced 24/7 monitoring.

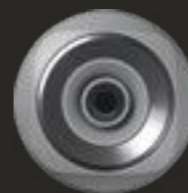




# THE EXPERIENCE

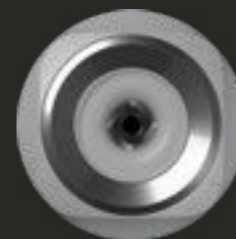
## All the right jets in all the right places

Strategically placed Jacuzzi® PowerPro® jets target specific muscle groups with a completely tailored massage. And because everyone likes their massage a little different, you can adjust the flow and intensity from each jet. It's the massage that's right for you.



**NX**  
*Target zone: Neck*

Channel pressure to the sensitive neck area with a highly focused stream that relieves tension and strain. Move the nozzle to personalise massage direction.



**FX**  
*Target zone: Shoulders, back, and feet*

Exclusive spiral design focuses on smaller muscle groups with an energetic impact, stimulating pressure points on the shoulders, back, and feet.



**VX**  
*Target zone: Legs, feet, and wrists*

By pulling in a large volume of air and pushing out a wide plume of water, it generates a gentle, yet powerful massage to unlock tight, overworked muscles.



**MX**  
*Target zone: Full Back*

The original performance therapy jet. The MX includes a completely adjustable nozzle with a 60° range for bold, high-volume massage action right where you need it.



**RX**  
*Target zone: Middle and upper back*

The powerful kneading motion provides a full-coverage massage to relieve muscle tension, primarily in your middle and upper back.



**FX-R**  
*Target zone: Shoulders, back, and feet*

This high-speed rotating jet combines broad coverage with penetrating power, reaching deep-tissue layers in the center of the lower back.



**BX**  
*Target zone: Legs and wrists*

Its patented design, developed to reinvigorate leg muscles, produces a soothing massage with our highest air-to-water ratio for a bubbly effect.

## Please be seated

Each Jacuzzi® Hot Tub features a thoughtfully engineered seat configuration that delivers personalised hydromassage and evenly balanced flow, so every seat offers an exceptional experience and every Hot Tub offers full-body massage.

A

### FX-IR therapy lounge

*Neck, shoulders, back, legs, and foot relief*

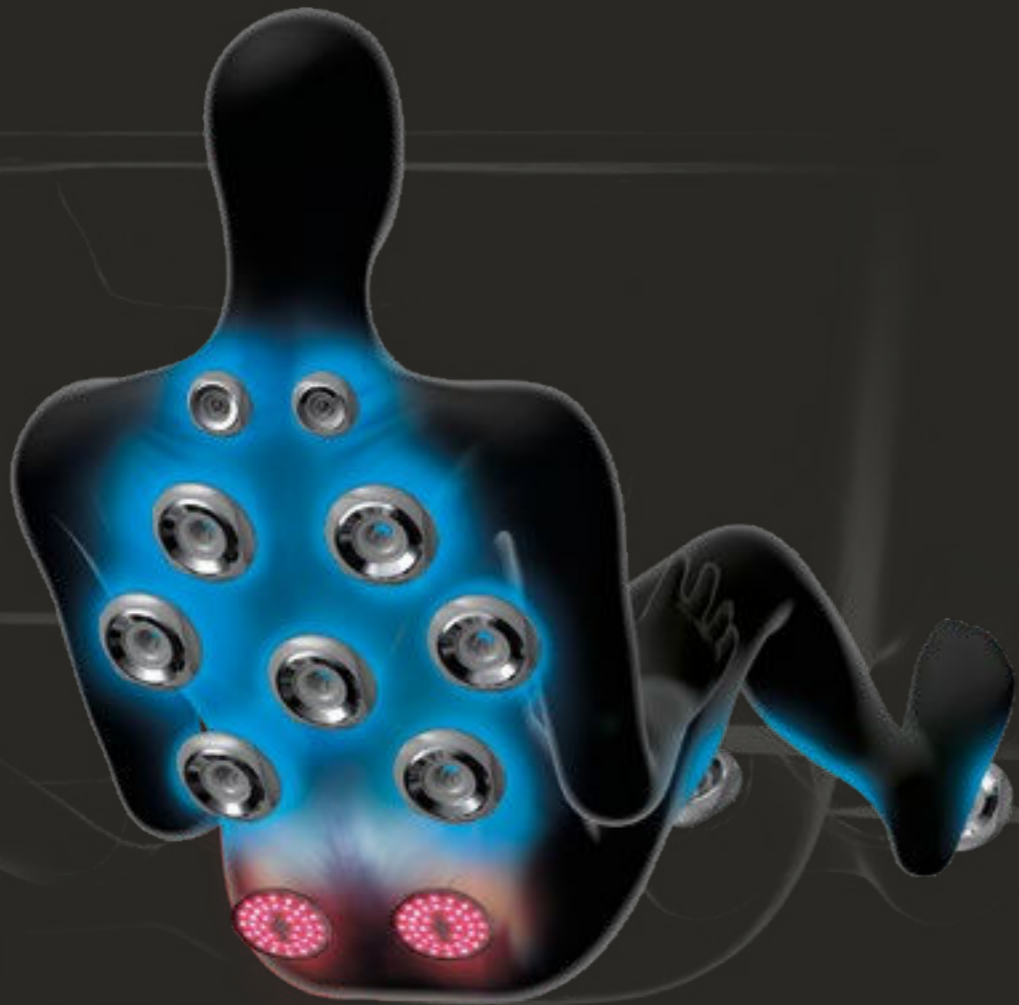
The world's first IR lounge builds on the world's first IR seat with a full-body experience. Along with the full back and neck hydromassage, FX jets relieve stress and strain along the legs and feet as IR and Red Light therapy target deep tissue in the lower back. Whole body comfort. Whole body wellness.

B

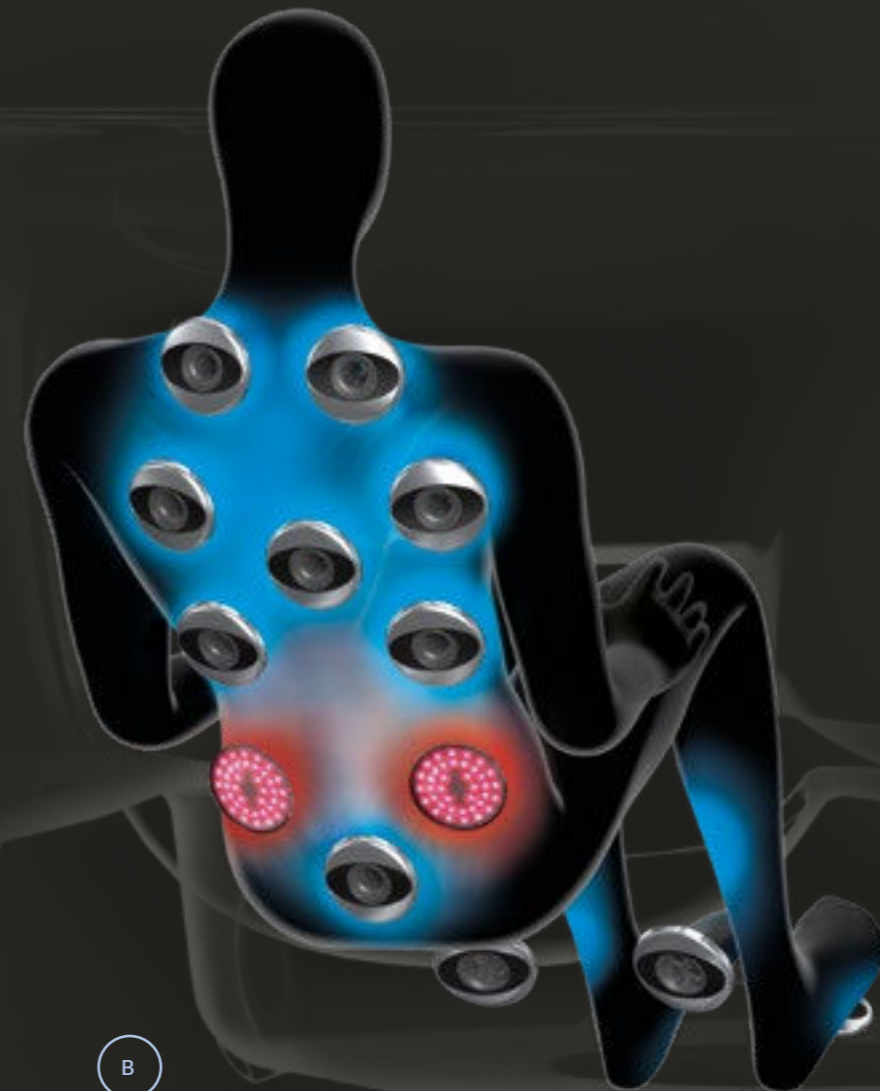
### FX-IR therapy seat

*Neck, shoulders, and back relief*

A collection of FX jets combines full back and neck hydromassage with Infrared and Red Light therapy that zeroes in on deep tissue within the lumbar region of the lower back. It's an unprecedented and rejuvenating Hot Tub experience.



A



B

Each seat is sculpted with an ergonomic focus to cradle the contours of the body. Specialised Jacuzzi® PowerPro® jets, recessed for your complete comfort, are thoughtfully positioned to relieve tension-prone muscles.

C

**MX therapy seat**

*The original in low-back relief*

Ease into this deeply contoured seat to release tension in the lower back with a high-volume, low-pressure massage. Maximised air output delivers a soothing deep-tissue massage. Paired with neck jets for a fully relaxing experience.

D

**RX therapy seat**

*Comforting back and shoulder relief*

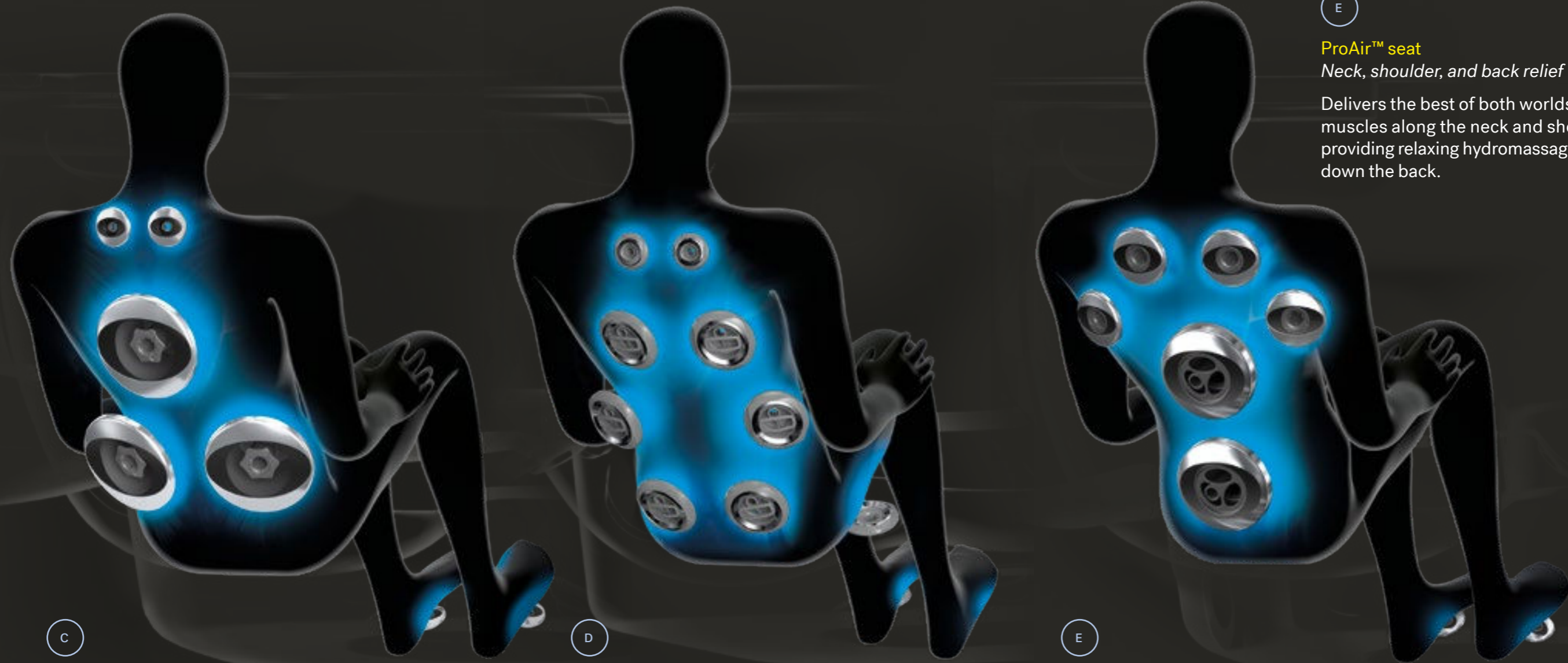
A ring of spinning RX jets targets back and shoulder muscles to soothe stiffness and release tension, while neck jets add further relief. The seat plays a vital role in our highest performing hydromassage.

E

**ProAir™ seat**

*Neck, shoulder, and back relief*

Delivers the best of both worlds, pinpointing muscles along the neck and shoulders, while also providing relaxing hydromassage to larger muscles down the back.



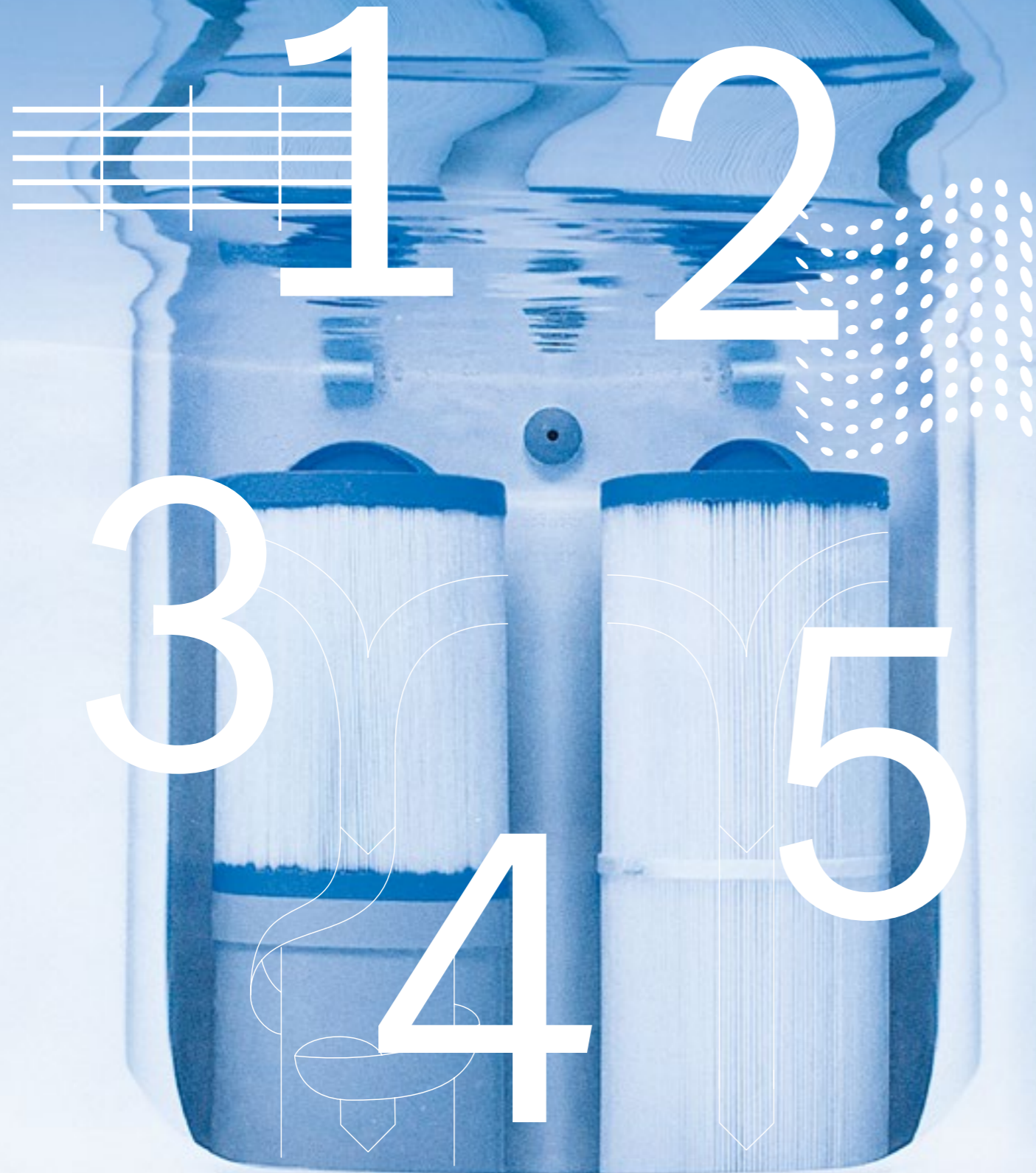
C

D

E

## A holistic approach to water care

Every Jacuzzi® Hot Tub includes filtration and water treatment technology to deliver exceptional cleaning<sup>1</sup> power and reduce the need for chemical sanitisers.



### 5-Stage<sup>2</sup> filtration process

Cleaner water means fewer water changes and less effort for you.

#### Stages 1 and 2

The skimmer and unique mesh ProCatch™ bag work together to clean the surface water and trap large debris for easy removal.

#### Stage 3

This exclusive system features a ProClear® filter, connected directly to a ProStream™ filtration pump, that filters an incredible 35 gallons per minute, giving you clean water, faster.

#### Stage 4

The ProClarity® polishing filter polishes the water down to a 3-micron level.

#### Stage 5

The ProClear filter activates and cleans when you are using the Hot Tub. This doubles the filtration when you need it most.

Clean water, less effort

Harness the power of active oxygen for a hands-free approach to water care. **ClearRay Active Oxygen®** system breaks down and neutralises contaminants.<sup>3</sup> It works harder to clean the water longer.

<sup>1</sup> Clean is defined as the removal of microscopic debris (down to 3-micron level, varies by model) from the water.

<sup>2</sup> Stages of filtration may vary by collection.

<sup>3</sup> Contaminants include dirt and grit.

## Beautiful water that's 99.99% chlorine-free

True Water® brings the power of nanobubble technology to home spas. It's the same technology used by advanced aquaculture and next-generation water purification systems.

Inspired by nanobubbles found in nature, such as crashing waves and waterfalls, True Water® uses trillions of oxygen-filled nanobubbles, 5,000 times smaller than a grain of sand, to continuously clean<sup>1</sup> the interior of your spa. They scrub away and reduce contaminants<sup>2</sup> to deliver clear, sparkling water that's 99.99% chlorine-free. You'll see, feel, and smell the difference.

True Water® is effective at reducing contaminants<sup>3</sup> and we have the data to prove it. Lab results<sup>4</sup> show that it reduced 99.99% of bacteria and viruses<sup>5</sup> without using chlorine or bromine.

Get the full story of True Water® on page 16.

1. Nanobubbles surround contaminants



2. Nanobubbles break down contaminants



3. Nanobubbles reduce 99.99% of bacteria and viruses without using chlorine or bromine



<sup>1</sup> Clean is defined as the removal of microscopic debris (down to 3-micron level, varies by model) from the water.

<sup>2</sup> Contaminants include dirt and grit.

<sup>3</sup> Contaminants include dirt and grit. An independent laboratory found True Water® to be 2.5x more effective than regular water at scrubbing Hot Tub surfaces.

<sup>4</sup> Antimicrobial efficacy testing was demonstrated using a simulated spa design for an in-use laboratory study based on guidance from the Standard Methods for the Examination of Water and Wastewater, 24th Ed., which are referenced in US EPA Guideline 810.2600.

<sup>5</sup> Simulated in-use laboratory study tested against *Escherichia coli*, *Enterococcus faecium*, *Listeria pneumophila*, *Pseudomonas aeruginosa*, and coliphage (viral surrogate) demonstrated a 99.99% reduction in bacteria and viruses in as little as 2 hours.

## The serenity is in the details

We build our Hot Tubs to be as reliable as they are relaxing. They're engineered to perform with high-grade materials and precision-crafted components, all rigorously tested for lasting enjoyment, year after year, with minimum upkeep.



A

### ProLast™ cover

Lock heat in with our durable ProLast™ cover. The vacuum seal retains heat and maintains water temperature longer for lower operating costs.

B

### Illuminated waterfall

A cascading stream of water with soothing sounds creates a calming ambient atmosphere.

C

### ProFusion™ shell

Highest-quality acrylic, a bonded vapor barrier, and a resin composite provide superior durability, even in extreme temperatures.

D

### High-performance energy-saving insulation

Insulation surrounds the shell and fills the cabinet, resulting in lower operating costs, quieter operation, and reliable performance in the coldest climates.

E

### Tool-free cabinetry

Durable, maintenance-free cabinetry withstands heat and cold and stays beautiful longer.

F

### SmartTub® remote monitoring upgrade

Includes a Cover Sensor to ensure your cover is always on; a Fill Sensor to save time filling or draining and let you know when water level is low; and a Water Sensor to detect when water is near sensitive components.

G

### Propolymer base

This strong, rugged foundation protects and insulates the spa from moisture and the elements.



# COLLECTIONS

# The next wave of innovation is here

Introducing the J5™ Collection.  
More immersive. More luxurious.  
More than you imagined a Hot Tub can be.



Take a comprehensive spin through the new J5™.

## J5™ Collection

The J5™ is a full-on immersive experience that supports your mental and physical well-being. Choose from three levels of hydromassage intensity or ease into full-seat IR therapy. More wellness. More personal. More intuitive. The only hard part? Deciding to get out.



# J5™

## What sets the J5™ apart?

There are over a dozen exclusive features and settings the world has never seen before. All designed to make your personal wellness retreat more intuitive and advanced than any Hot Tub out there.

Let's dive into a few.



### One tap is all it takes.

Want better sleep? There's a mode for that. Need deeper relaxation? There's a mode for that. Five fully immersive experience modes in all. Each its own curated, multisensory experience with coordinated hydromassage, IR therapy, and lights.

### Our most advanced hydrotherapy ever

Relaxation and recovery are easy to come by with three preset hydromassage levels, ranging from gentle circulation to intense massage. Full-seat Infrared therapy adds rejuvenation that's more than skin deep to your wellness routine.

### Personalised for each user

Each family member can tailor the spa settings to their liking, so each experience is unique and personal. Just save your preferences to a user profile and one touch activates your custom spa session, even before you step in.

### So easy, you can relax

The SmartTub® app for J5™ achieves an unmatched degree of intuitive control. Easily choose experience modes, generate user profiles, set schedules, track IR usage, check energy savings, and take charge of nearly every aspect of your spa.

- J5™ / J4™ / J-300™
- J5™ exclusive
- J5™ / J4™ exclusive
- J-300™ exclusive
- IR + Red Light



Model

## J509™

Seats	Dimensions <sup>1</sup>	Electrical <sup>2</sup>
8-9	Centimetres 239x280x94	40A / 32A
	Inches 94x110x37	
Dry weight <sup>3</sup>	Average filled weight <sup>3</sup>	Average spa volume
578 kg	2,489 kg	1,912 litres

### Jets



### IR lights



Model

## J508L™

Seats	Dimensions <sup>1</sup>	Electrical <sup>2</sup>
6-7 Lounge	Centimetres 239x239x94	40A / 32A
	Inches 94x94x37	
Dry weight <sup>3</sup>	Total filled weight <sup>3</sup>	Average spa volume
483 kg	2,072 kg	1,590 litres

### Jets

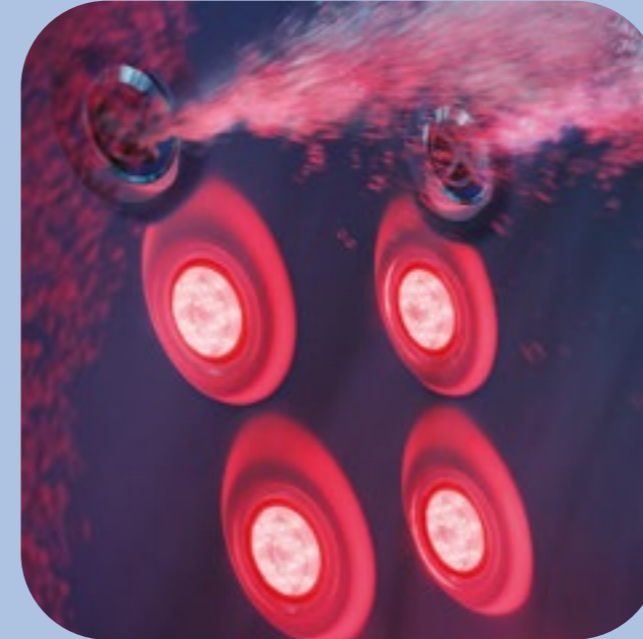


### IR lights



### Infrared therapy seat

Our most advanced hydrotherapy, Infrared and Red Light, now offers two additional IR lights exclusively on the J5™. While the IR focuses on your lower and middle back, exhilarating hydromassage jets ease tension from your neck down to your feet.

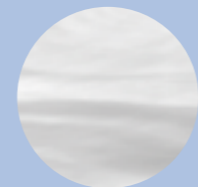


### Waterfall with illuminated ledge

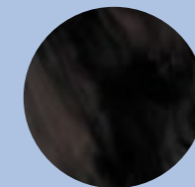
Take relaxation to the next level as an extra wide, graceful sheet of water cascades beneath an integrated ledge with a softly frosted, illuminated finish. It's the perfect place to hold your phone, drinks, or other items.



### Interior



Platinum

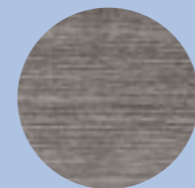


Midnight

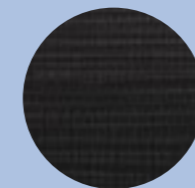


Canyon  
(matte)

### Exterior

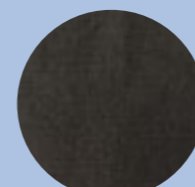


Flax



Noir

### Cover



Black

### Standard features

- Jacuzzi® True Water®
- Full-seat Infrared + Red Light therapy
- Immersive experience modes
- User profiles
- Preset hydromassage levels
- Sound system with Transducers
- SmartTub® system with exclusive J5™ content
- Jacuzzi® PowerPro® jets
- Specialty Jacuzzi® PowerPro® RX jets
- Specialty Jacuzzi® PowerPro® VX jets
- Individual seat air control
- Intuitive ProTouch Plus™ control
- In-seat control panel
- Dual illuminated waterfalls
- 6-stage filtration system
- ProStream™ filtration pump
- Hybrid galvanised steel frame
- Floating propolymer foundation
- SmartSeal™ energy-efficient insulation
- ProFinish® tool-free cabinetry
- Luxe design aesthetics
- Immersive interior lighting
- Ambient exterior lighting with motion sensor
- Illuminated bar top drink holders
- Adjustable headrests
- ProLast™ cover in black

### Optional features

- SmartTub® sensor pack

<sup>1</sup> All specifications are subject to change without notice. Hot tub dimensions are approximate and shown in L x W x H. The images are for layout reference; they do not reflect acrylic options. The product is shown with IR + Red Light therapy (standard). <sup>2</sup> Not all electrical configurations are listed. Please see the Jacuzzi® Hot Tub Dimension and Specification Handbook for additional details. <sup>3</sup> See Jacuzzi® Hot Tub Dimension and Specification Handbook for detailed weight considerations for installation.

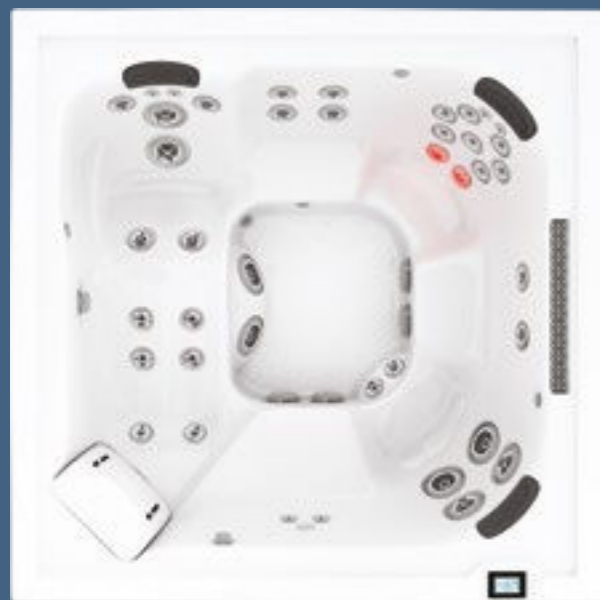
## J4™ Collection

Clean, sculpted lines frame the welcoming water. From the ergonomic perfection of its lounge seating to our legendary, stress-melting hydromassage, every detail is crafted to deliver a deeper, more restorative escape.



J4™

- J5™ / J4™ / J-300™
- J5™ exclusive
- J5™ / J4™ exclusive
- J-300™ exclusive
- IR + Red Light



Model

## J408L™

Seats  
5-6  
Lounge

Dimensions<sup>1</sup>  
Centimetres  
227x227x87

Electrical<sup>2</sup>  
32A

Inches  
89x89x34

Dry weight<sup>3</sup>  
415 kg

Average filled weight<sup>3</sup>  
1,645 kg

Average spa volume  
1,231 litres

Jets



IR lights



Model

## J404L™

Seats  
3-4  
Double  
Lounge

Dimensions<sup>1</sup>  
Centimetres  
176x214x84

Inches  
69x84x33

Dry weight<sup>3</sup>  
313 kg

Average filled weight<sup>3</sup>  
1,222 kg

Average spa volume  
909 litres

Jets



IR lights



### IR therapy lounge

The world's most advanced hydrotherapy, Infrared and Red Light, now offers full-body rejuvenation. Our exclusive IR therapy focuses on the lumbar region of the lower back while exhilarating hydromassage eases tension from your neck and back to your legs and feet.

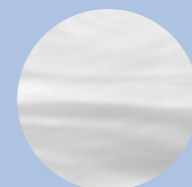


### Full-featured modern design

The geometric form brings crisp lines and dramatic lighting to your outdoor space. A welcoming deck allows for socialising and easy entry. Once inside, the gentle waterfall completes a soothing, transformational experience.

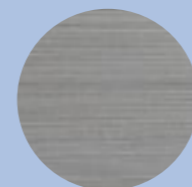


Interior



Platinum

Exterior



Brushed Gray



Smoked Ebony

Cover



Black

### Standard features

- Jacuzzi® True Water®
- Exclusive Infrared + Red Light therapy
- SmartTub® system
- Jacuzzi® PowerPro® jets
- Specialty Jacuzzi® PowerPro® RX jets
- Individual seat air control
- Illuminated infinity-edge waterfall
- 5-stage filtration system
- ProStream™ filtration pump
- Floating propolymer foundation
- SmartSeal™ energy-efficient insulation
- ProFinish® tool-free cabinetry
- ProLast™ cover in black
- Sleek, modern styling
- Premium LED interior lighting
- Wide deck with space for drinks
- Exterior lighting
- ProTouch™ touchscreen control

### Optional features

- SmartTub® sensor pack

<sup>1</sup> All specifications are subject to change without notice. Hot tub dimensions are approximate and shown in L x W x H. The images are for layout reference; they do not reflect acrylic options. The product is shown with IR + Red Light therapy (standard). <sup>2</sup> Not all electrical configurations are listed. Please see the Jacuzzi® Hot Tub Dimension and Specification Handbook for additional details. <sup>3</sup> See Jacuzzi® Hot Tub Dimension and Specification Handbook for detailed weight considerations for installation.

## J-300™ Collection

Release yourself from the demands of the day and pause in the ultimate refuge. Experience the pleasure of our industry-leading ergonomic seating and the power of perfectly placed jetting, both designed to raise your comfort level to new heights.

# J-300™



- J5™ / J4™ / J-300™
- J5™ exclusive
- J5™ / J4™ exclusive
- J-300™ exclusive
- IR + Red Light



Model

## J-375™

Seats	Dimensions <sup>1</sup>	Electrical <sup>2</sup>
5-6 Lounge	Centimetres 232x232x96	32A
	Inches 91x91x38	
Dry weight <sup>3</sup> 376 kg	Avg filled weight <sup>3</sup> 2,060 kg	Average spa volume 1,685 litres

Jets



IR lights



Model

## J-355™

Seats	Dimensions <sup>1</sup>	Electrical <sup>2</sup>
5-6 Lounge	Centimetres 214x232x96	32A
	Inches 84x91x38	
Dry weight <sup>3</sup> 369 kg	Avg filled weight <sup>3</sup> 1,730 kg	Average spa volume 1,363 litres

Jets



IR lights



Model

## J-345™

Seats	Dimensions <sup>1</sup>	Electrical <sup>2</sup>
6-7	Centimetres 214x214x92	32A
	Inches 84x84x36	
Dry weight <sup>3</sup> 352 kg	Average filled weight <sup>3</sup> 1,657 kg	Average spa volume 1,306 litres

Jets



IR lights



Model

## J-335™

Seats	Dimensions <sup>1</sup>	Electrical <sup>2</sup>
5-6 Lounge	Centimetres 214x214x92	32A
	Inches 84x84x36	
Dry weight <sup>3</sup> 347 kg	Average filled weight <sup>3</sup> 1,671 kg	Average spa volume 1,325 litres

Jets



IR lights



<sup>1</sup> All specifications are subject to change without notice. Hot tub dimensions are approximate and shown in L x W x H. The images are for layout reference; they do not reflect acrylic options. The product is shown with IR + Red Light therapy (standard). <sup>2</sup> Not all electrical configurations are listed. Please see the Jacuzzi® Hot Tub Dimension and Specification Handbook for additional details. <sup>3</sup> See Jacuzzi® Hot Tub Dimension and Specification Handbook for detailed weight considerations for installation.

- J5™ / J4™ / J-300™
- J5™ exclusive
- J5™ / J4™ exclusive
- J-300™ exclusive
- IR + Red Light



Model

## J-332™

<b>Seats</b>	<b>Dimensions<sup>1</sup></b>	<b>Electrical<sup>2</sup></b>
5 Double Lounge	Centimetres 214x214x93	32A
	Inches 84x76x33.5	
<b>Dry weight<sup>3</sup></b>	<b>Average filled weight<sup>3</sup></b>	<b>Average spa volume</b>
347 kg	2,050 kg	1,325 litres

Jets



IR lights



Model

## J-315™

<b>Seats</b>	<b>Dimensions<sup>1</sup></b>	<b>Electrical<sup>2</sup></b>
2-3 Lounge	Centimetres 168x194x81	32A / 20A
	Inches 66x76x32	
<b>Dry weight<sup>3</sup></b>	<b>Average filled weight<sup>3</sup></b>	<b>Average spa volume</b>
241 kg	1,035 kg	795 litres

Jets



### Jacuzzi® PowerPro® jets

Minimise tension as you maximise propulsion. Each model includes up to eight varieties of Jacuzzi® PowerPro® jets for a superior hydromassage.

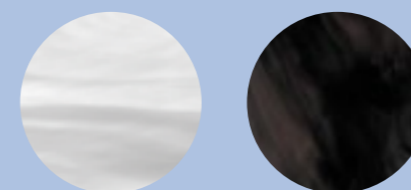


### SmartTub® app

Our exclusive SmartTub® system is like a remote control that lets you monitor, operate, and protect your Hot Tub, with convenient features and exclusive savings you can only get from Jacuzzi®.



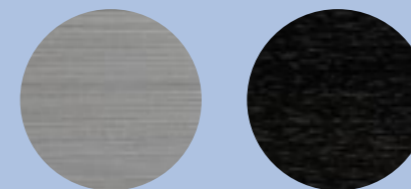
Interior



Platinum

Midnight

Exterior



Brushed Gray

Smoked Ebony

Cover



Black

### Standard features

- Jacuzzi® PowerPro® jets
- Specialty Jacuzzi® PowerPro® BX jets
- SmartTub® system
- Individual seat air control
- Illuminated waterfall
- Hydrosoothe® massage pillow
- ClearRay Active Oxygen® system
- 4-stage filtration
- ProStream™ filtration pump
- Floating propolymer foundation
- ProFinish® tool-free cabinetry
- ProLast™ cover in black
- LED interior lighting
- Illuminated drink holders
- Exterior lighting
- ProTouch™ touchscreen control
- Exclusive Infrared + Red Light therapy<sup>1</sup>
- ProClarity® polishing filter<sup>2</sup>
- SmartSeal™ energy-efficient insulation
- BLUEWAVE® stereo, standard speakers and subwoofer

### Optional features

- SmartTub® sensor pack

<sup>1</sup> All specifications are subject to change without notice. Hot tub dimensions are approximate and shown in L x W x H. The images are for layout reference; they do not reflect acrylic options. The product is shown with IR + Red Light therapy (standard). <sup>2</sup> Not all electrical configurations are listed. Please see the Jacuzzi® Hot Tub Dimension and Specification Handbook for additional details. <sup>3</sup> See Jacuzzi® Hot Tub Dimension and Specification Handbook for detailed weight considerations for installation.

<sup>1</sup> See model details. Available on J-300™ models 5-6 seats and larger. <sup>2</sup> Available as aftermarket upgrade only.

## J-200™ Collection

Pleasing aesthetics, rejuvenating hydromassage, and legendary comfort are what Jacuzzi® is famous for, and that sets the foundation for our most affordable hot tubs, now with an updated look. Take a seat and enjoy the view from this warm-water escape.

J-200™



- J5™ / J4™ / J-300™
- J5™ exclusive
- J5™ / J4™ exclusive
- J-300™ exclusive
- IR + Red Light



Model

## J-275™

<b>Seats</b>	<b>Dimensions<sup>1</sup></b>	<b>Electrical<sup>2</sup></b>
6 Lounge	Centimetres 226x226x91	32A
	Inches 89x89x36	
<b>Dry weight<sup>3</sup></b>	<b>Avg filled weight<sup>3</sup></b>	<b>Average spa volume</b>
347 kg	2,125 kg	1,363 litres
<b>Jets</b>		
38		

Model

## J-245™

<b>Seats</b>	<b>Dimensions<sup>1</sup></b>	<b>Electrical<sup>2</sup></b>
7	Centimetres 213x213x91	32A
	Inches 84x84x36	
<b>Dry weight<sup>3</sup></b>	<b>Avg filled weight<sup>3</sup></b>	<b>Average spa volume</b>
325 kg	1,971 kg	1,211 litres
<b>Jets</b>		
37		

## J-235™

<b>Seats</b>	<b>Dimensions<sup>1</sup></b>	<b>Electrical<sup>2</sup></b>
5-6 Lounge	Centimetres 214x214x92	32A
	Inches 84x84x36	
<b>Dry weight<sup>3</sup></b>	<b>Avg filled weight<sup>3</sup></b>	<b>Average spa volume</b>
330 kg	1,692 kg	1,363 litres
<b>Jets</b>		
34		

Model

## J-225™

<b>Seats</b>	<b>Dimensions<sup>1</sup></b>	<b>Electrical<sup>2</sup></b>
6-7	Centimetres 204x204x84	32A / 20A
	Inches 80x80x33	
<b>Dry weight<sup>3</sup></b>	<b>Average filled weight<sup>3</sup></b>	<b>Average spa volume</b>
281 kg	1,620 kg	1,341 litres
<b>Jets</b>		
26		

<sup>1</sup> All specifications are subject to change without notice. Hot tub dimensions are approximate and shown in L x W x H. The images are for layout reference; they do not reflect acrylic options. The product is shown with IR + Red Light therapy (standard). <sup>2</sup> Not all electrical configurations are listed. Please see the Jacuzzi® Hot Tub Dimension and Specification Handbook for additional details. <sup>3</sup> See Jacuzzi® Hot Tub Dimension and Specification Handbook for detailed weight considerations for installation.



Model

## J-215™

<b>Seats</b> 2-3 Lounge	<b>Dimensions<sup>1</sup></b> Centimetres 176x204x84	<b>Electrical<sup>2</sup></b> 32A / 20A
	Inches 69x80x33	
<b>Dry weight<sup>3</sup></b> 235 kg	<b>Average filled weight<sup>3</sup></b> 1,067 kg	<b>Average spa volume</b> 833 litres
<b>Jets</b> 21		

### Illuminated headrest

Add visual flair at the touch of a button when you activate the multicoloured LED backlit headrests.

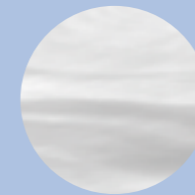


### Illuminated waterfall

Add a touch of calming ambiance with the soothing sound of moving water, backlit for a glowing waterfall effect. Included on select models.

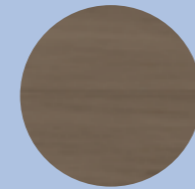


### Interior

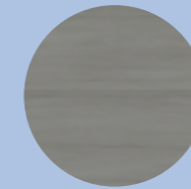


Platinum

### Exterior

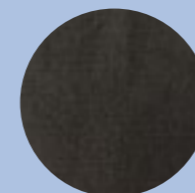


Pecan



Horizon Gray

### Cover



Black

### Standard features

- Proprietary jets with stainless steel accent
- Illuminated waterfall<sup>1</sup>
- SmartTub® system
- Backlit headrests
- 3-stage filtration system
- ClearRay Active Oxygen® water system
- ProClassic™ filter
- Propolymer foundation
- Tool-free cabinetry
- ProLast™ cover in black
- LED interior lighting
- Built-in drink holders
- Exterior lighting

### Optional features

- SmartTub® sensor pack

<sup>1</sup>Varies by model.

## S-Series™

Pleasing aesthetics, exceptional comfort, and legendary Jacuzzi® quality set the foundation for our most affordable hot tubs. Crafted for everyday indulgence, the new S-Series™ combines simple controls, thoughtful seating, and a clean, elegant design.

# S-Series™



Model

## S-600™

<b>Seats</b>	<b>Dimensions<sup>1</sup></b>	<b>Electrical<sup>2</sup></b>
6 Lounge	Centimetres 216x216x92	20A / 13A
	Inches 85x85x36	
<b>Dry weight<sup>3</sup></b>	<b>Avg filled weight<sup>3</sup></b>	<b>Average spa volume</b>
338 kg	1,585 kg	1,230 litres
<b>Jets</b>		
40		

Model

## S-550™

<b>Seats</b>	<b>Dimensions<sup>1</sup></b>	<b>Electrical<sup>2</sup></b>
5 Double Lounge	Centimetres 200x200x84	20A / 13A
	Inches 79x79x33	
<b>Dry weight<sup>3</sup></b>	<b>Avg filled weight<sup>3</sup></b>	<b>Average spa volume</b>
302 kg	1,347 kg	1030 litres
<b>Jets</b>		
40		

Model

## S-300™

<b>Seats</b>	<b>Dimensions<sup>1</sup></b>	<b>Electrical<sup>2</sup></b>
3 Lounge	Centimetres 157x207x82	20A / 13A
	Inches 61x81x32	
<b>Dry weight<sup>3</sup></b>	<b>Average filled weight<sup>3</sup></b>	<b>Average spa volume</b>
230 kg	1,121 kg	880 litres
<b>Jets</b>		
22		

<sup>1</sup> All specifications are subject to change without notice. Hot tub dimensions are approximate and shown in L x W x H. The images are for layout reference; they do not reflect acrylic options. <sup>2</sup> Not all electrical configurations are listed. Please see the Jacuzzi® Hot Tub Dimension and Specification Handbook for additional details. <sup>3</sup> See Jacuzzi® Hot Tub Dimension and Specification Handbook for detailed weight considerations for installation.

# Your moment starts here

Hot Tubs designed to fit seamlessly into smaller outdoor spaces, without compromising on hydrotherapy. The S-Series delivers quality, comfort and performance.

Standard

Optional

	S-600™ see pg 58	S-550™ see pg 58	S-300™ see pg 58
FourCore™ shell construction	<input checked="" type="checkbox"/>	<input checked="" type="checkbox"/>	<input checked="" type="checkbox"/>
SunFlex™ plumbing system	<input checked="" type="checkbox"/>	<input checked="" type="checkbox"/>	<input checked="" type="checkbox"/>
Reflect™ perimeter insulation	<input checked="" type="checkbox"/>	<input checked="" type="checkbox"/>	<input checked="" type="checkbox"/>
SoftTouch™ head rest	<input checked="" type="checkbox"/>	<input checked="" type="checkbox"/>	<input checked="" type="checkbox"/>
Rugged Base™ insulated, moulded ABS	<input checked="" type="checkbox"/>	<input checked="" type="checkbox"/>	<input checked="" type="checkbox"/>
SunFrame™ high-impact plastic frame	<input checked="" type="checkbox"/>	<input checked="" type="checkbox"/>	<input checked="" type="checkbox"/>
SunGlow™ in-spa illumination	<input checked="" type="checkbox"/>	<input checked="" type="checkbox"/>	<input checked="" type="checkbox"/>
SunGlow™ LED perimeter lighting	<input checked="" type="checkbox"/>	<input checked="" type="checkbox"/>	<input checked="" type="checkbox"/>
Stainless steel jets	<input checked="" type="checkbox"/>	<input checked="" type="checkbox"/>	<input checked="" type="checkbox"/>
Balboa control system	<input checked="" type="checkbox"/>	<input checked="" type="checkbox"/>	<input checked="" type="checkbox"/>
Dynamic thermal tuning™	<input checked="" type="checkbox"/>	<input checked="" type="checkbox"/>	<input checked="" type="checkbox"/>
Integrated heat pump control	<input checked="" type="checkbox"/>	<input checked="" type="checkbox"/>	<input checked="" type="checkbox"/>
Audio & SmartLINK™ WIFI Module	<input checked="" type="checkbox"/>	<input checked="" type="checkbox"/>	<input checked="" type="checkbox"/>
Balboa SV heat pump	<input type="checkbox"/>	<input type="checkbox"/>	<input type="checkbox"/>
Warranty coverage (years)*			
Shell structure	10	10	10
Shell surface	5	5	5
Equipment and controls	2	2	2
Plumbing Components	2	2	2
Cabinet	1	1	1
Jets, lights, stereo components	2	2	2
Other components	1	1	1

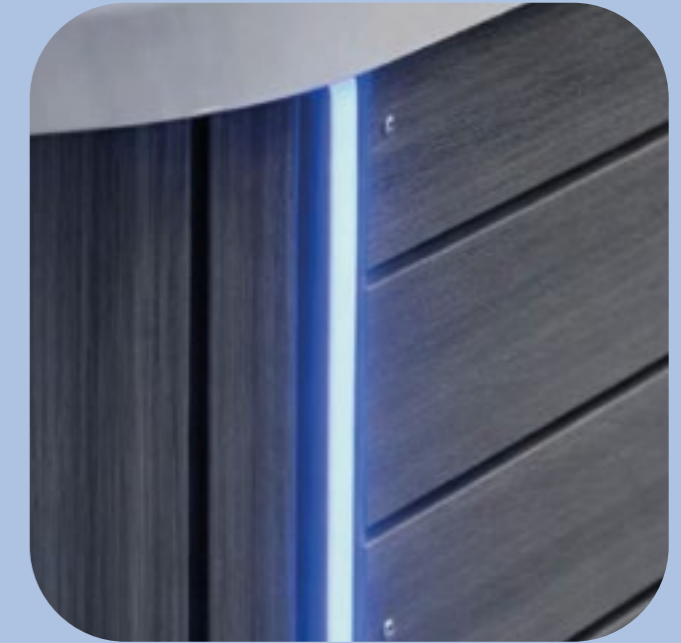
## SoftTouch™ headrests

Soft, cushioned headrests provide gentle support for the head and neck, helping you relax in comfort while maintaining a clean, elegant look



## External multicolour lighting

Subtle exterior lighting adds a refined visual accent to the cabinet, enhancing the hot tub's appearance after dark and creating a soft ambient glow around your outdoor space.



### Interior



Silver Marble

### Exterior



Grey

### Standard features

- FourCore™ shell construction
- SunFlex™ plumbing system
- Reflect™ perimeter insulation
- SoftTouch™ head rest
- Rugged Base™ insulated, moulded ABS
- SunFrame™ high-impact plastic frame
- SunGlow™ in-spa illumination
- SunGlow™ LED perimeter lighting
- Stainless steel jets
- Balboa control system
- Dynamic thermal tuning™
- Integrated heat pump control
- Audio & SmartLINK™ WIFI Module

### Optional features

- Balboa SV heat pump

# The moment you've been waiting for

There's a Hot Tub for every outdoor space, style and budget. No matter which collection you choose, our focus on quality and design will ensure you enjoy your Hot Tub for years to come.

	Enhanced	Standard	Optional	J5™ Collection see pg 36	J4™ Collection see pg 42	J-300™ Collection see pg 46	J-200™ Collection see pg 52
Immersive experience modes	Enhanced	Standard	Optional	Enhanced	Standard	Optional	Optional
Hybrid galvanised steel frame	Enhanced	Standard	Optional	Enhanced	Standard	Optional	Optional
Sound system with Transducers	Enhanced	Standard	Optional	Enhanced	Standard	Optional	Optional
BLUEWAVE® stereo with standard speakers	Enhanced	Standard	Optional	Enhanced	Standard	Optional	Optional
Jacuzzi® exclusive IR + Red Light therapy	Enhanced	Standard	Optional	Enhanced	Standard	Optional	Optional
Jacuzzi® True Water®	Enhanced	Standard	Optional	Enhanced	Standard	Optional	Optional
ClearRay Active Oxygen® system	Enhanced	Standard	Optional	Enhanced	Standard	Optional	Optional
SmartTub® system	Enhanced	Standard	Optional	Enhanced	Standard	Optional	Optional
SmartSeal™ insulation	Enhanced	Standard	Optional	Enhanced	Standard	Optional	Optional
ProTouch™ touchscreen control	Enhanced	Standard	Optional	Enhanced	Standard	Optional	Optional
Jacuzzi® PowerPro® jets	Enhanced	Standard	Optional	Enhanced	Standard	Optional	Optional
Individual seat air controls	Enhanced	Standard	Optional	Enhanced	Standard	Optional	Optional
ProStream™ filtration pump	Enhanced	Standard	Optional	Enhanced	Standard	Optional	Optional
Interior and exterior lighting	Enhanced	Standard	Optional	Enhanced	Standard	Optional	Optional
Illuminated waterfall	Enhanced	Standard	Optional	Enhanced	Standard	Optional	Optional
Propolymer foundation	Enhanced	Standard	Optional	Enhanced	Standard	Optional	Optional
Tool-free cabinetry	Enhanced	Standard	Optional	Enhanced	Standard	Optional	Optional
ProClarity® filtration system	Enhanced	Standard	Optional	6-stage	5-stage	4-stage	3-stage
Headrests	Enhanced	Standard	Optional	Enhanced	Standard	Optional	Optional
Drink shelf / holders	Enhanced	Standard	Optional	Enhanced	Standard	Optional	Optional
ProLast™ cover in black	Enhanced	Standard	Optional	Enhanced	Standard	Optional	Optional
Warranty coverage (years)*							
Shell structure				10	10	10	10
Shell surface				7	7	7	7
Equipment and controls				4	3	3	2
Plumbing Components				4	3	3	2
Cabinet				5	5	5	1
Jets, lights, stereo components				2	2	2	1
Other components, SmartTub®, True Water®, ClearRay Active Oxygen® system				1	1	1	1



\*\*Not available on J-315™ †Domestic spas registered for warranty



● *Jacuzzi*

**75**  
**YEARS**

## **OF HYDROTHERAPY**

From the first whirlpool bath to today's most advanced spas, Jacuzzi® has led the way in at-home hydrotherapy since the day we invented it.

SpaRetailer



Jacuzzi® is proud to be inducted into the 2025 Hot Tub Hall of Fame.

[www.jacuzzi.com](http://www.jacuzzi.com)

Jacuzzi® Spa and Bath Ltd.

Jacuzzi® Group Head Office, 8 Turnberry Park Road, Gildersome, Morley, Leeds LS27 7LE

HTBROCHURE26

©2025 Jacuzzi® Hot Tubs. All rights reserved. Jacuzzi® is a registered trademark of Jacuzzi® Inc., used with permission. All other brands, product names, company names, trade names, trademarks, and service marks used are the property of their respective owners. Jacuzzi® Hot Tubs may make product modifications and enhancements. Specifications may change without notice. International products may be configured differently to meet local electrical requirements. Dimensions are approximate. Manufactured under one or more United States patent numbers. Other patents may apply.